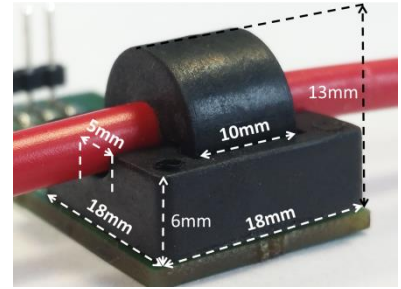


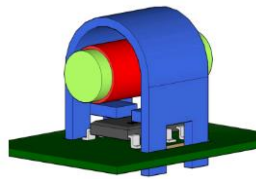
USP

- Clamp around an existing current cable
- Non-intrusive solution
- Coreless current sensor
- Easy PCB soldering
- Excellent output linearity
- High signal-to-noise and very fast response time (2μs)
- On-chip compensation for thermal and lifetime drifts

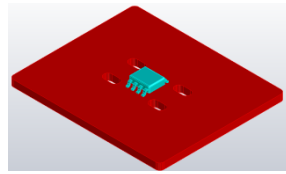


Concept

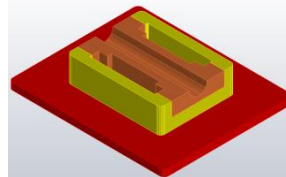
- IMC-Hall® sensor (MLX91208)
- UC Shield mounted on top
- Shield split in two parts
- Shield in plastic housings



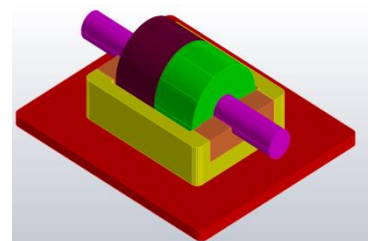
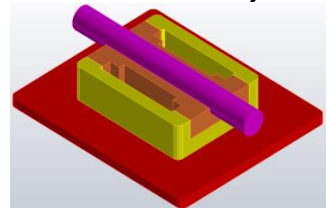
SO-8 sensor on PCB



Bottom part soldered on PCB

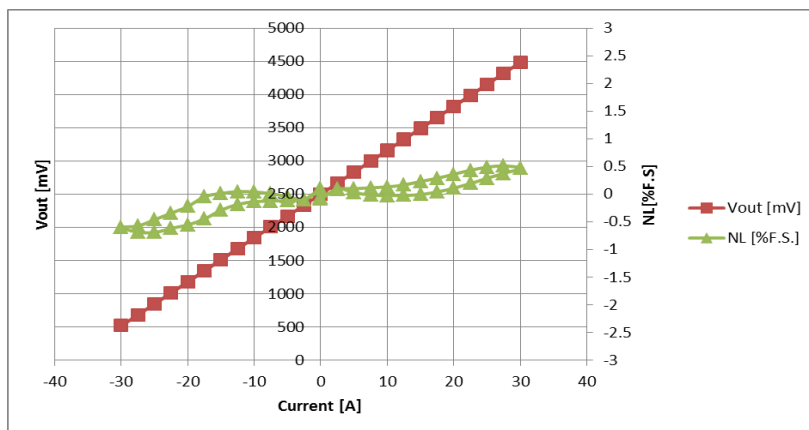


Wire assembly



Typical output characteristics and non-linearity for 30A calibration:

- MLX91208CAL with Sensitivity = 360mV/mT (+/- 2V for 30A)
- non-linearity: < +/-0.5 %F.S., i.e. < +/-0.15A



Typical output characteristics and non-linearity for 150A calibration:

- MLX91208CAH with Sensitivity = 86 mV/mT (+/- 2V for 30A)
- achieved non-linearity: < +/-0.5 %F.S., i.e. < +/-0.75A

