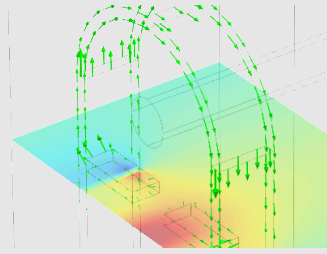


Maglab Clamp-On Concept

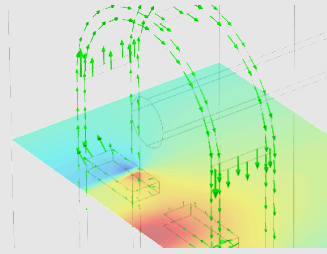


maglab Whitepaper - Concept Study

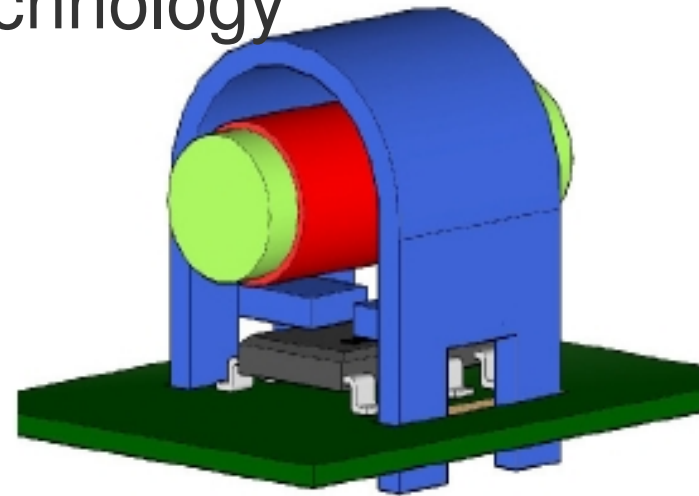
“Contactless >>Clamp-On<< Current Sensor Modules”

30 June 2012 (HBR)
Pat. Pending / rev007

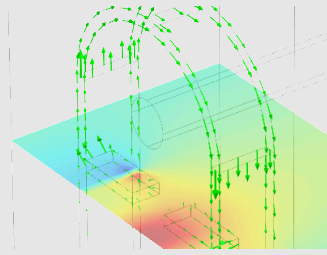
Clamp-On Current Sensor



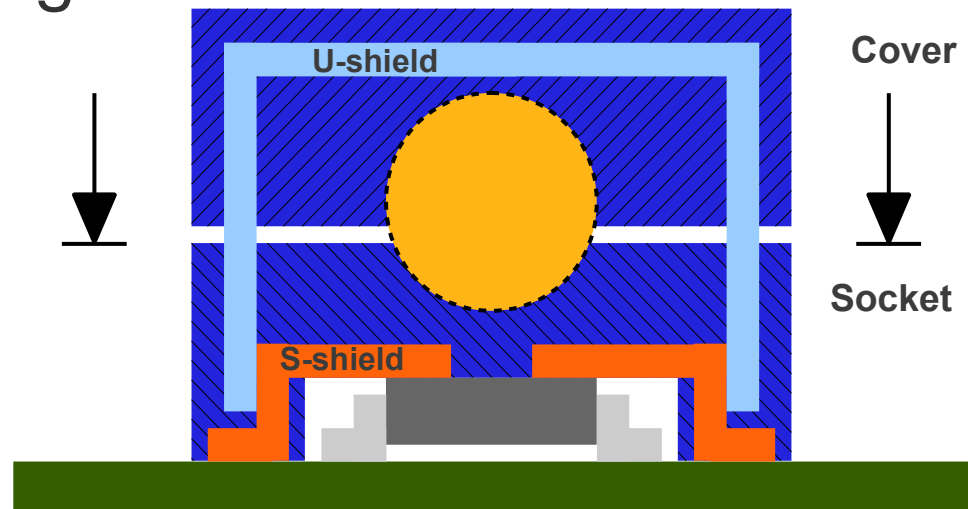
- Concept:
 - + low-cost shield/concentrator
 - + contactless current measurement with IMC Hall-current sensor or magneto-resistive sensor
 - + maglab patented shield technology



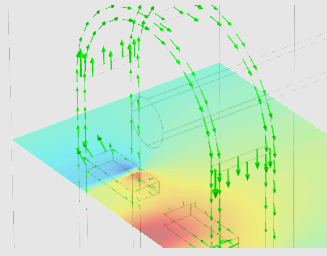
Module Sketch



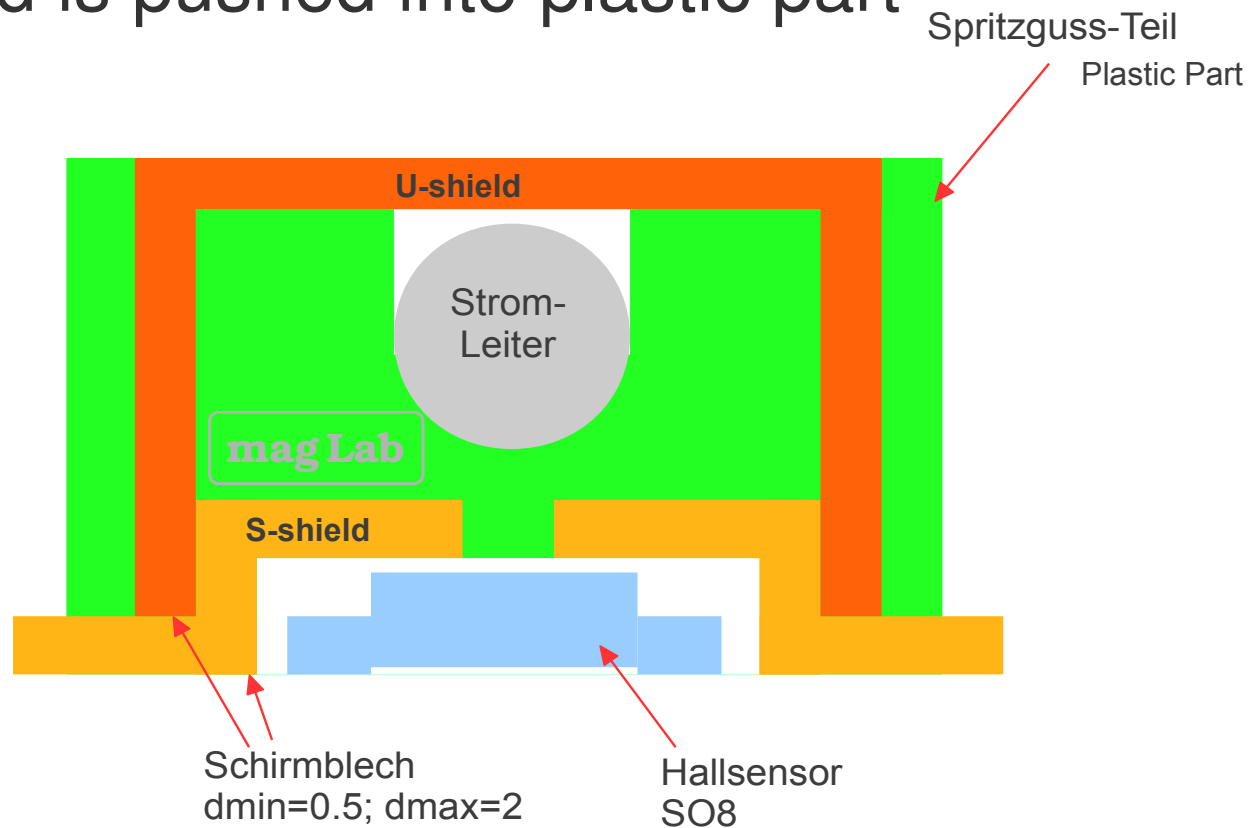
- Two plastic parts: Cover is pushed into socket
 - + Variable cable diameter, e.g. 8mm
 - + shield/concentrator consists of 1x U-shield and 2x S-shield legs



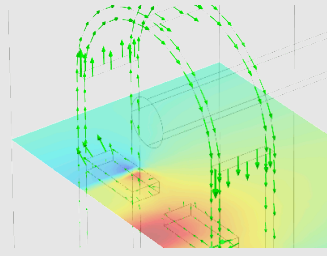
Single Plastic Part



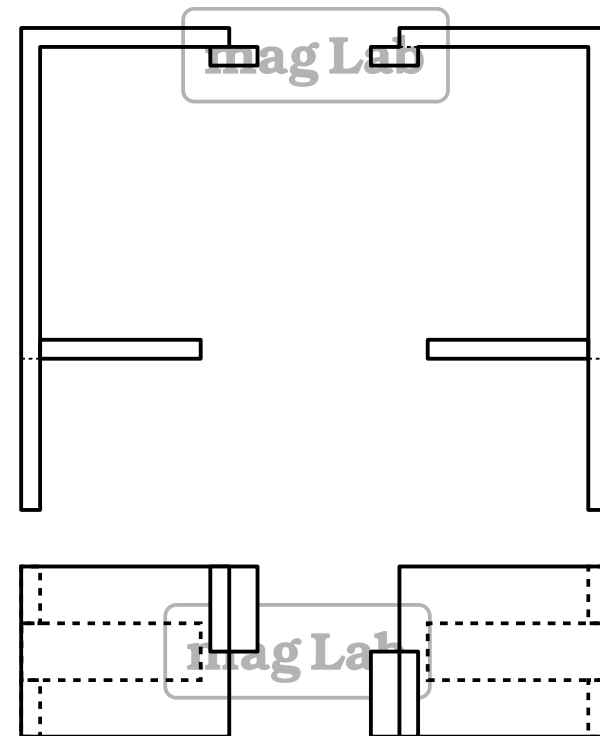
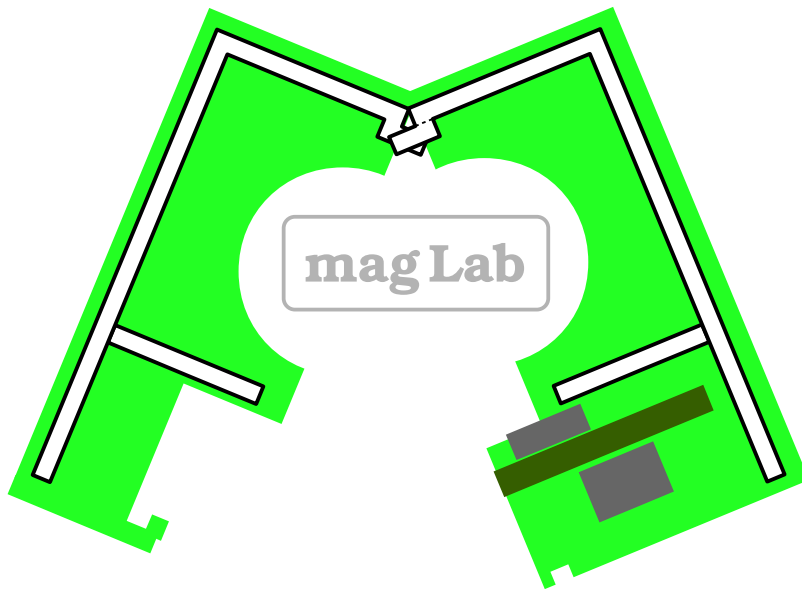
- Single plastic part (green)
 - + U-Shield is pushed into plastic part



Clamp-On-Cable

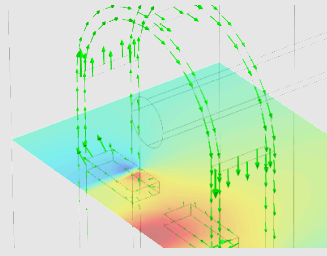


- Magnetic shield/concentrator integrated into Clamp-On module



magnetic

Custom Specific Solutions



Thank you
for choosing **maglab**

maglab GmbH
Güterstrasse 141
CH-4053 Basel
Tel: +41 61 261 16 46
Fax: +41 61 261 16 45
<http://www.maglab.ch>

manometric