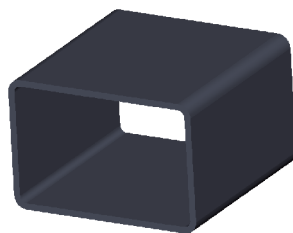


RC-Shield

Rectangular Chamber (RC) Soft Ferromagnetic Shield



Description

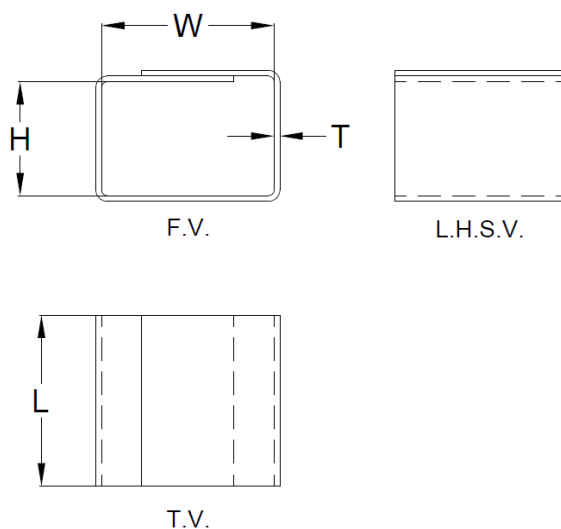
The RC-shield is a soft ferromagnetic shield featuring superior material characteristics such as high linearity, very low hysteresis, and high magnetic permeability.

The shield is designed for protecting sensitive circuits from unwanted parasitic magnetic fields. Applications include power inverters, magnetic position and current sensors, magnetic immunity, and EMI.

Magnetic Characteristics

Parameter	Typical Value	Unit
Relative Permeability	100'000	a.u.
Initial Relative Permeability	7000	a.u.
Saturation Flux Density	1	T
Hysteresis	2.8	A/m
Curie Temperature	450	degC

Geometry



Shield Specification ¹	RC-[W]-	-[H]-	-[L]-	-[T]
RC-20-15-15-0.8 (order code example)	W=20	H=15	L=15	T=0.8

¹ Standard version contains 48% Ni; others on request