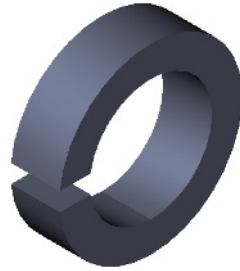


AMC1R5-L

Amorphous Soft-Magnetic Core



Description

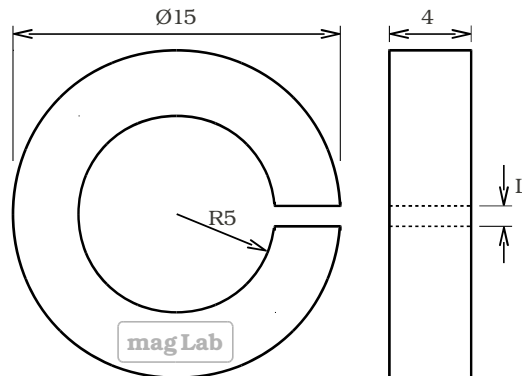
The AMC1R5-L is an amorphous Fe-based soft ferromagnetic core designed for contactless current sensing applications. It is used in combination with a magnetic field sensor, i.e., Hall sensor which is placed in the airgap.

The core features superior material characteristics leading to high bandwidth, high linearity, low core losses, and very low hysteresis.

Magnetic Characteristics

Parameter	Typical Value	Unit
Relative Permeability	100'000	a.u.
Saturation Flux Density	1.4	T
Hysteresis	6	A/m
Curie Temperature	410	degC

Geometry



Airgap Length	AMC1R5-[L]
1.7mm	L=1.7
3.5mm (standard)	L=3.5
5mm	L=5