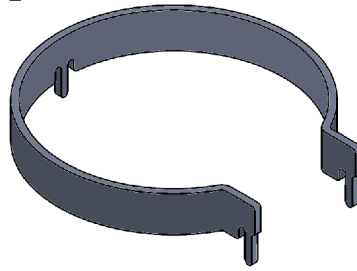


C-Shield

Cylindrical C-Shape Ni-Fe Soft Ferromagnetic Shield



Description

The C-shield is a soft ferromagnetic core featuring superior material characteristics such as high linearity and very low hysteresis.

The shield is designed for contactless current sensing in combination with a magnetic field sensor, i.e., Hall sensor, and a current conductor. Furthermore the shield protects the sensor from parasitic magnetic fields caused by nearby conductors or other magnetic field sources.

Magnetic Characteristics

Parameter	Typical Value	Unit
Relative Permeability	100'000	a.u.
Initial Relative Permeability	7000	a.u.
Saturation Flux Density	1	T
Hysteresis	2.8	A/m
Curie Temperature	450	degC

Geometry

(all dimensions: mm)

